

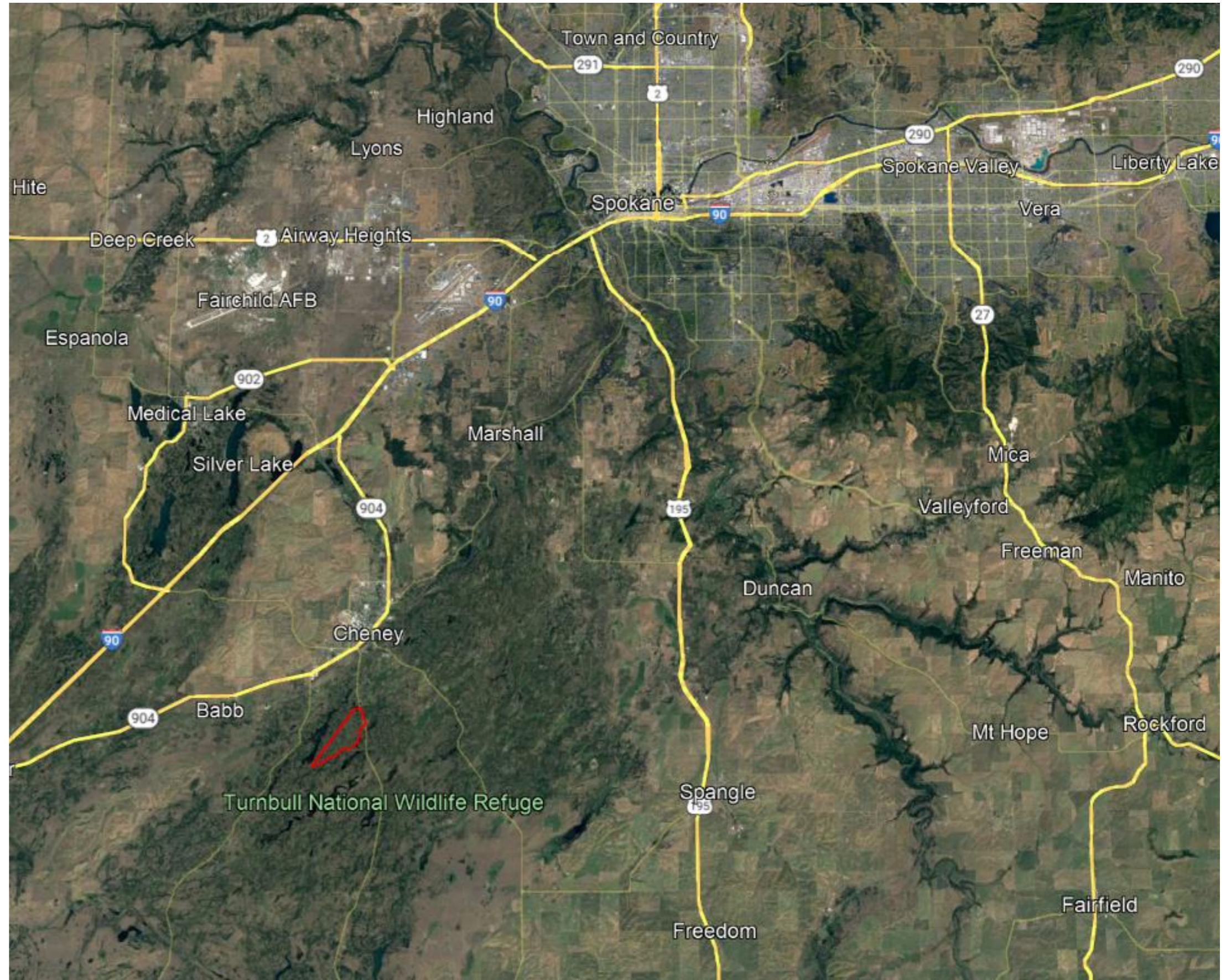
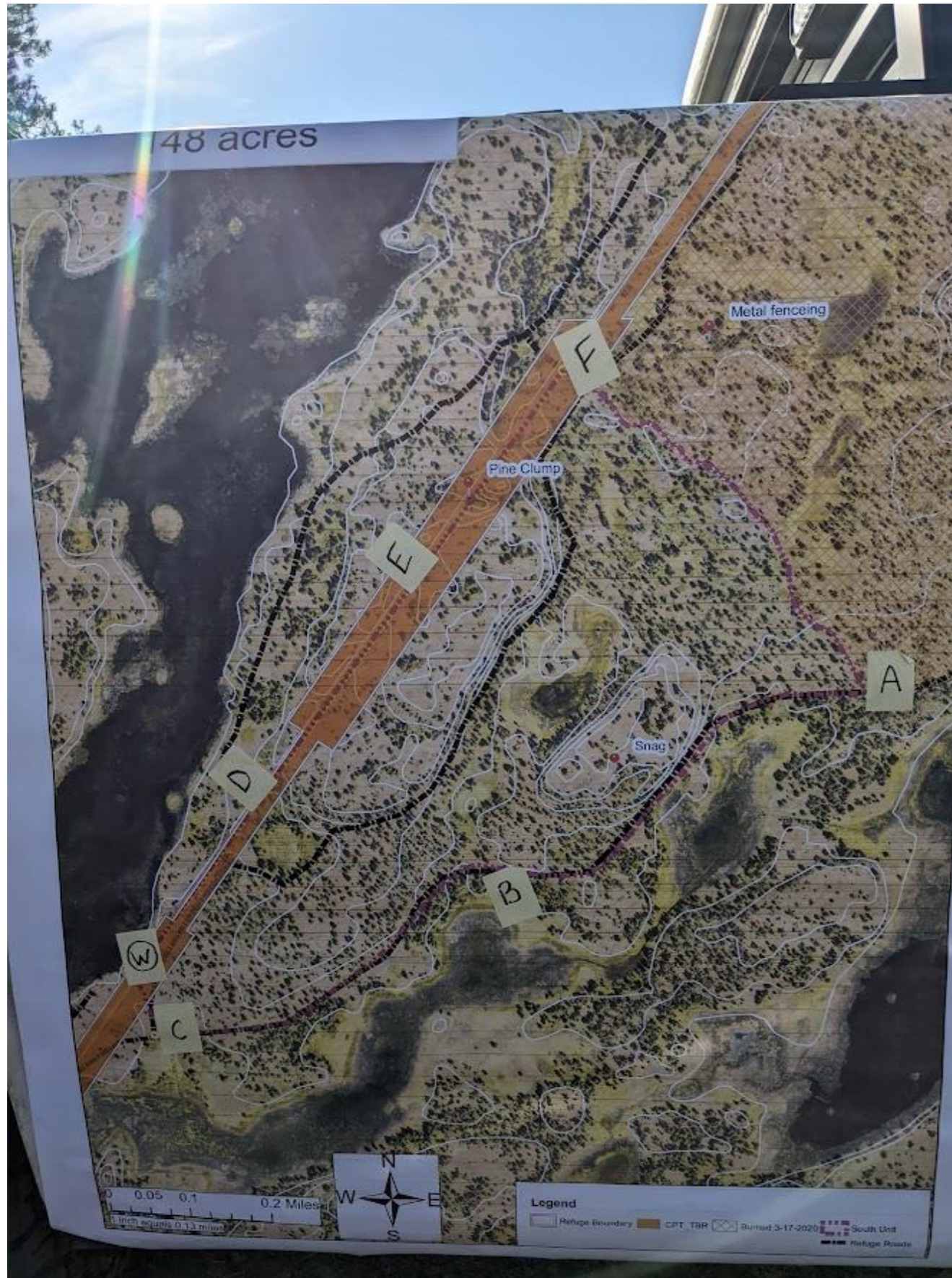


Railroad Butte RX

148 acre

10/15/2022

Report Completed by the University of Idaho
Prescribed Burning Lab (FOR 427)



Organization

Burn boss and burn boss trainee (2)

Div. South, Div. North (2)

3 type 6 engines

1 type 5 engine

1 type 3 engine

Fuel mule UTV (1)

3 type 7 UTV

BLM handcrew

University of Idaho crew (7)

Spokane county engine

1 type 3 engine - contingency



Weather

Time	Temp.	RH	Wind Speed	Wind Direction	PIG	FDFM	Location
9:30	57	67%	4 to 5	East	30%	10%	South Line
10:30	65	57%	5	East	30%	10%	South Line
11:00	68	49%	3	East	30%	10%	South Line
12:00	76	38%	4	North East	30%	9%	South Line
13:00	76	32%	4	North East	30%	9%	South Line
14:00	72	31%	4	North	30%	9%	Between A&F
15:00	71	30%	4	North	30%	9%	Between A&F
16:00	70	34%	3	North East	30%	9%	Between A&F

Summary of Events

- Test fire at 11:30-1200
- 1200-Fire was approved and continued
- Blackline on north and south division
- At 1230 interior ignition began
- 1400 fire intensity increased, some torching and flame lengths over 4 feet
- At 1400 ignition continued west along previously burned area
- At 1500 group alpha and bravo came together.
- Ignition stopped at 1630
- From 1500-1630 patrolled east line and moped up
- AAR at 1730 at alpha



Test fire 11:30

Fire Behavior





Fire Behavior

AAR Discussion points

What went well

- Met objectives
- No one was hurt
- Lots of training
- Positive attitudes
- Good weather
- Limited smoke impacts

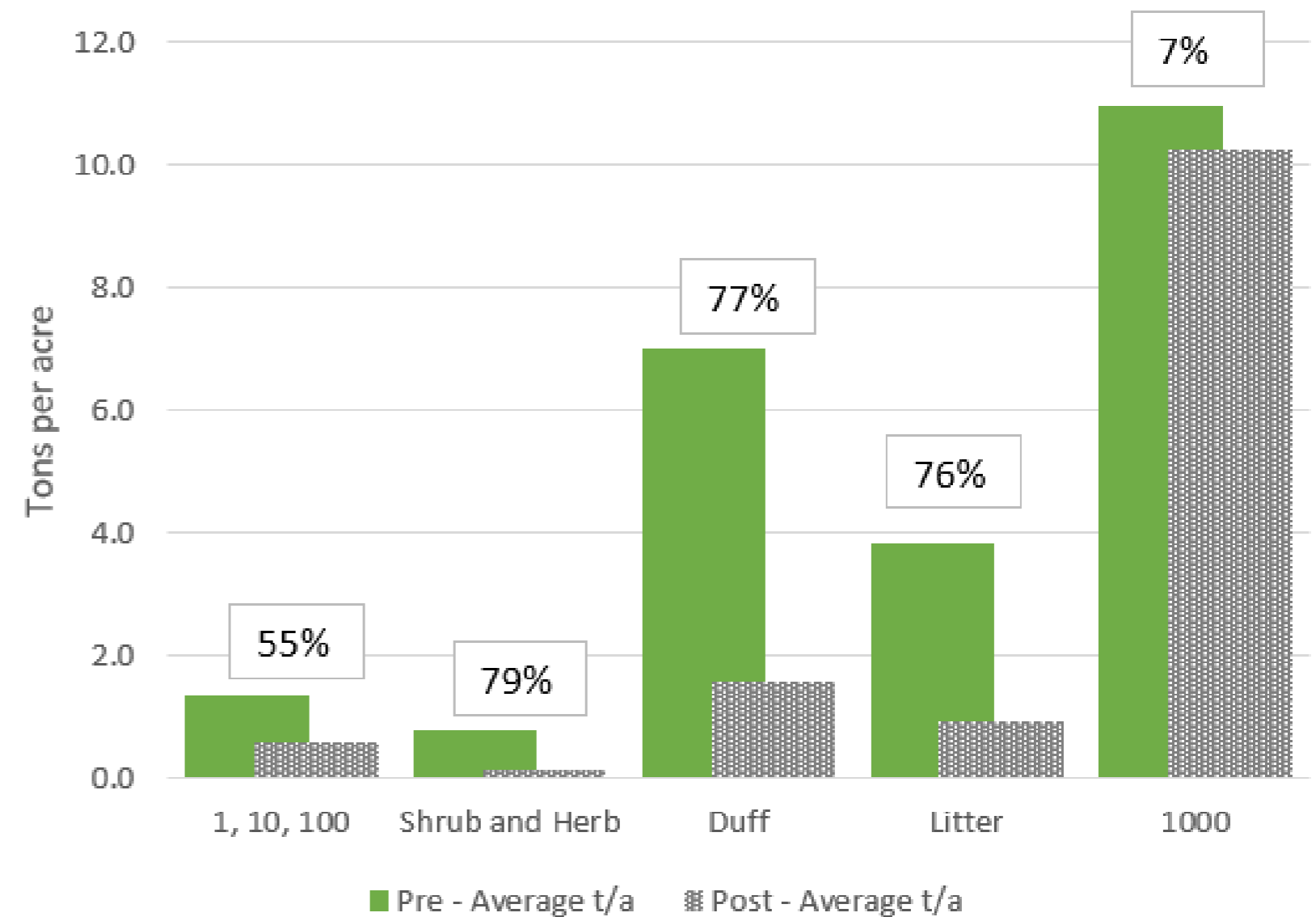
What could have improved

- Use numbers for drop points
- Use letters for division names
- Line out ignition plan more thoroughly before ignition.
- Draw out ignition directions when adjusting ignition pattern.
- Position fuel to decrease the break between fueling which decreased the column lift.
- Hand out maps
- Simplify communication

Fire Effects

- Objective: Reduce 1 hour fuels by 50-80%
- Objective: Reduce 10 and 100 hour fuels by 30-50%
- Pre measured and photos 9.16.2022
- Post measured 11.16.2022
- 0 year Post photos 11.21.2022
- 1 year post photos 11.11.2023

Rail Road Butte RX 10/15/2023
Pre-fire and Post-fire Fuel Loading and
% Reduction by Size Class
n = 16 microplots over 6 plots





Objective: Reduce ponderosa pine seedlings and saplings by 50-75%



Objective: Reduce ponderosa pine seedlings and saplings by 50-75%

Railroad Plot 1 – North and East

Pre-Burn

Year 0

Year 1

N
o
r
t
h



E
a
s
t



Railroad Plot 1 – South and West

Pre-Burn

Year 0

Year 1

S
o
u
t
h



W
e
s
t



Pre-Fire



Post-Fire



1 Year Post-Fire



Railroad Plot 2: North (top) and East (bottom)

Railroad Plot 2: South (top) and West (bottom)



Pre-Fire

Post Fire

1 Year Post-Fire

Railroad North & East

Pre-Burn



Post-Burn Year 0



Post-Burn Year 1



Railroad South & West

Pre-Burn



Post-Burn Year 0



Post-Burn Year 1



Plot 4 – North and East



Plot 4



Plot 4 South and West



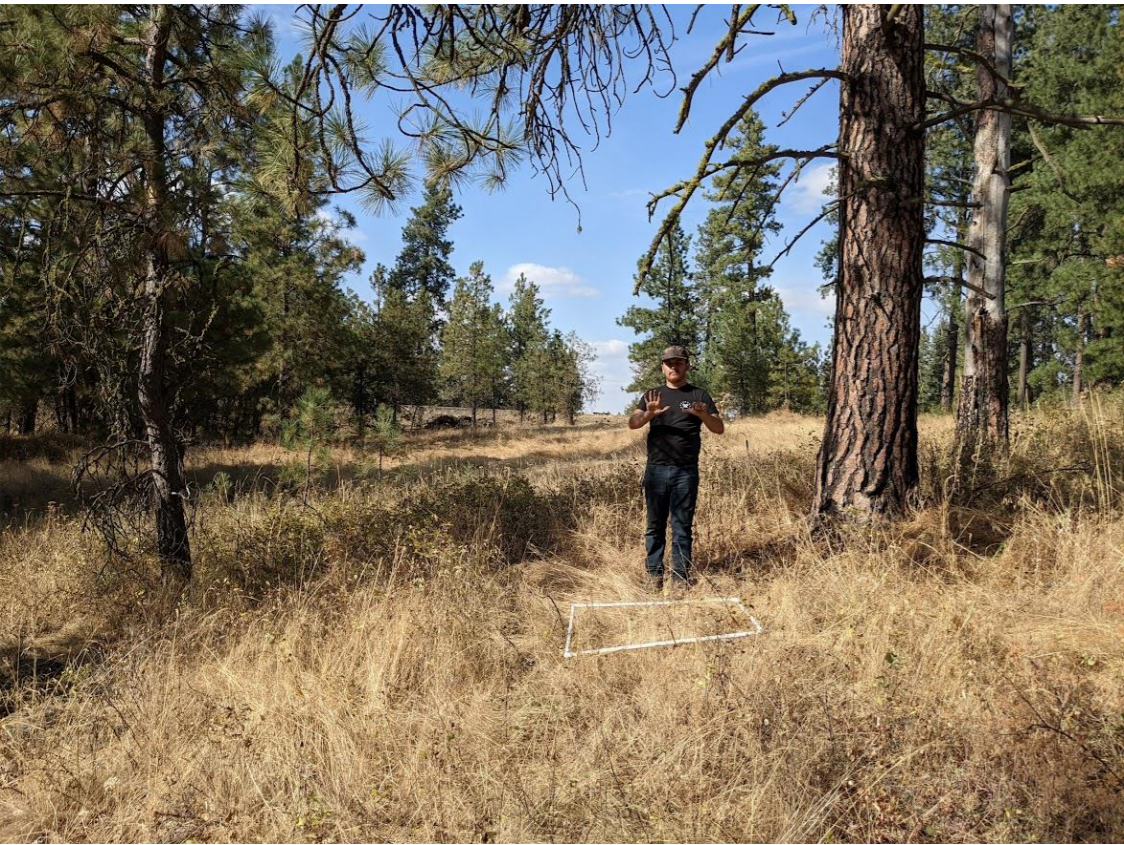
Plot 5 North and East



Plot 5 South and West



Plot 6 North and East



Plot 6 South and West

