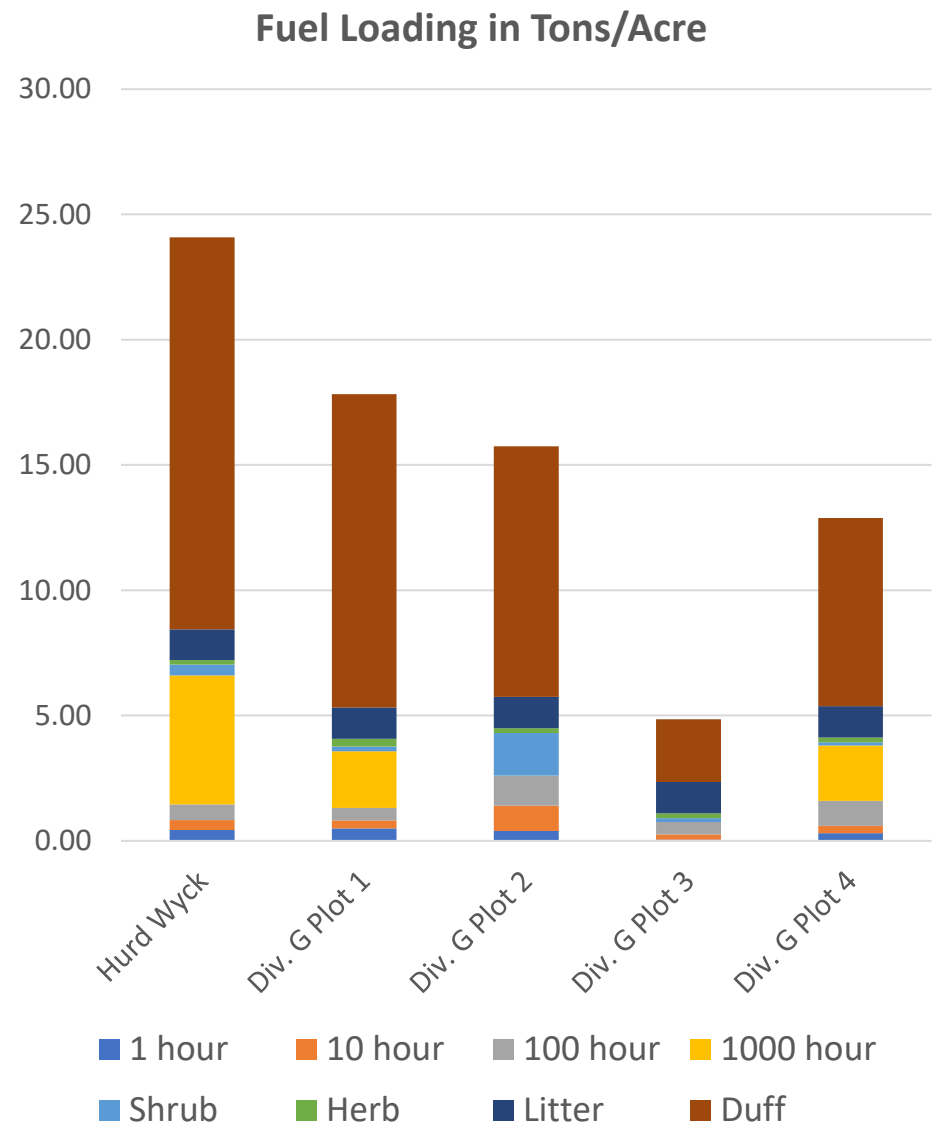
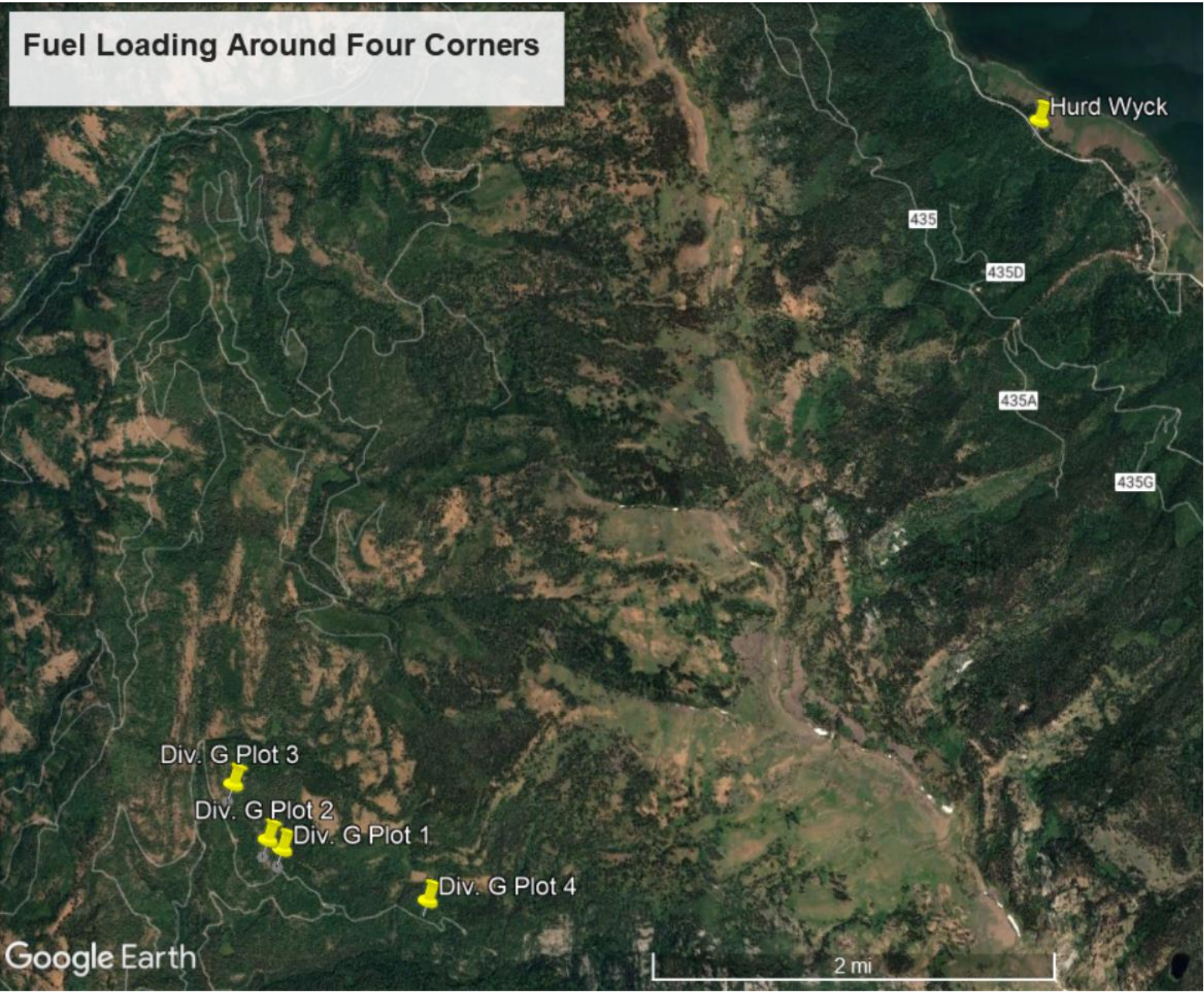


A photograph of a forest fire. In the foreground, a large, textured tree trunk is visible on the right side. The background shows a fire burning through a forest, with flames and smoke rising. The sky is a pale blue. The text is overlaid on the left side of the image.

FOBS Report Four Corners Fire

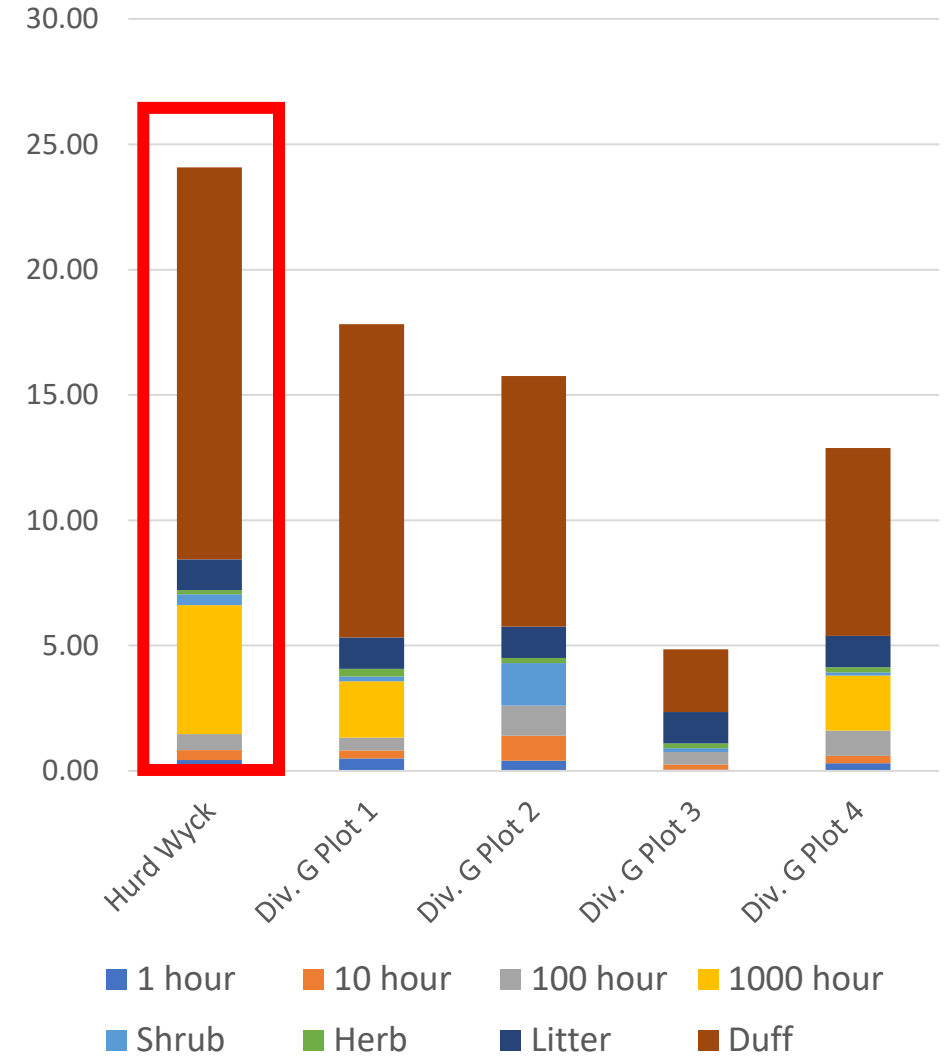
Heather Heward – FOBS
8.25.2022 to 8.28.2022



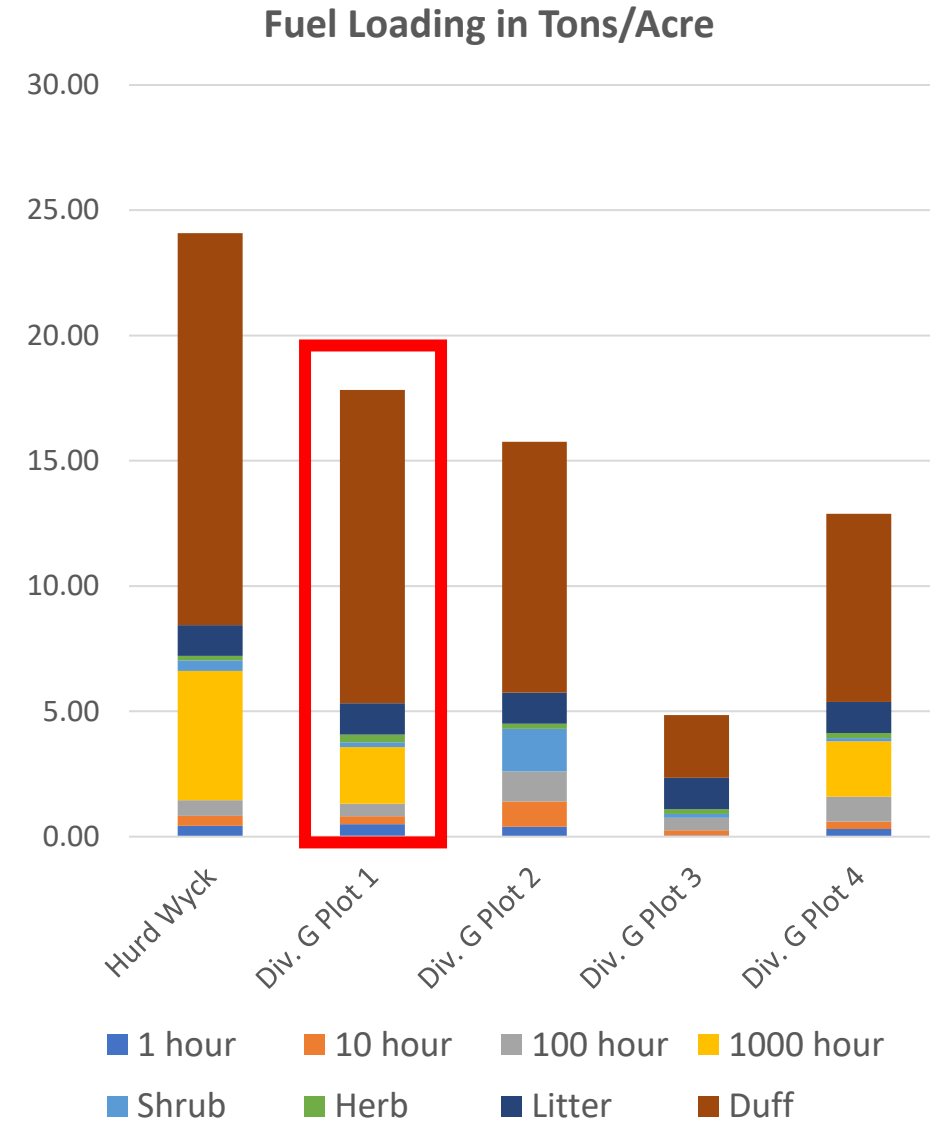
Hurd Wyck



Fuel Loading in Tons/Acre



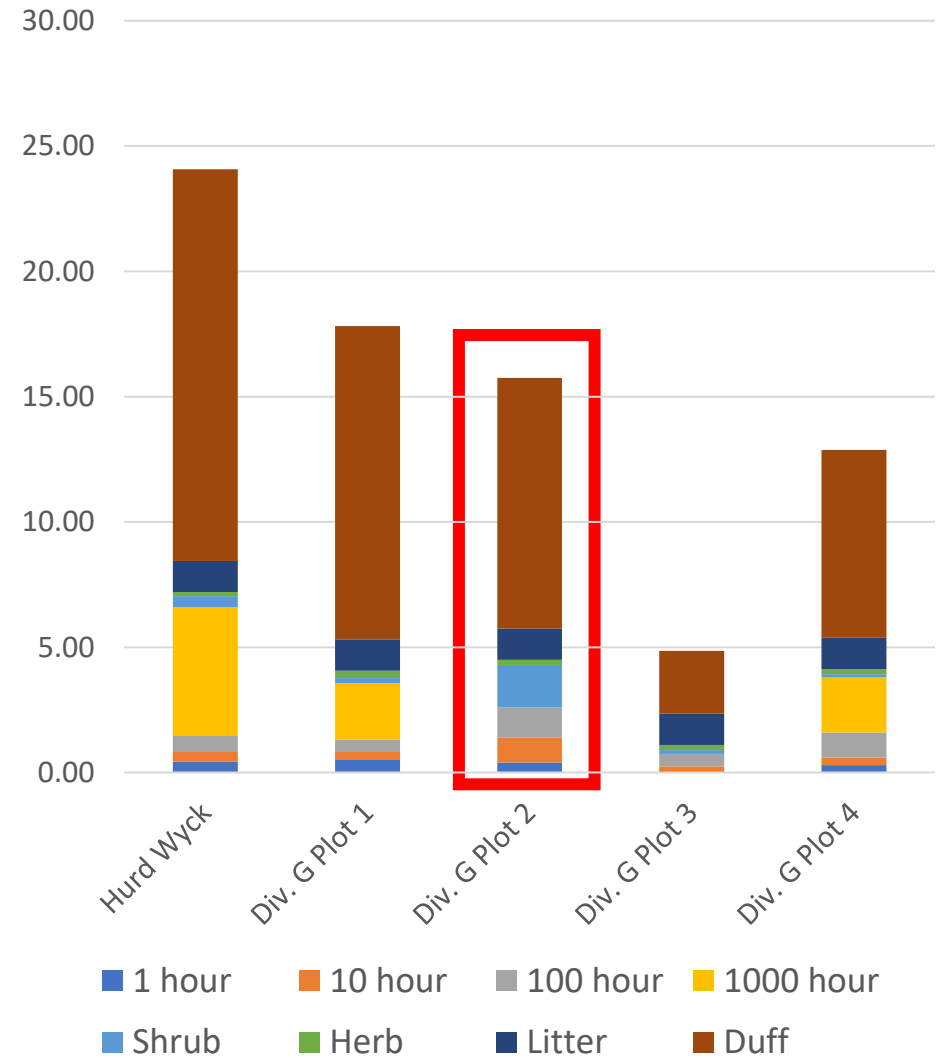
Div. G Plot 1



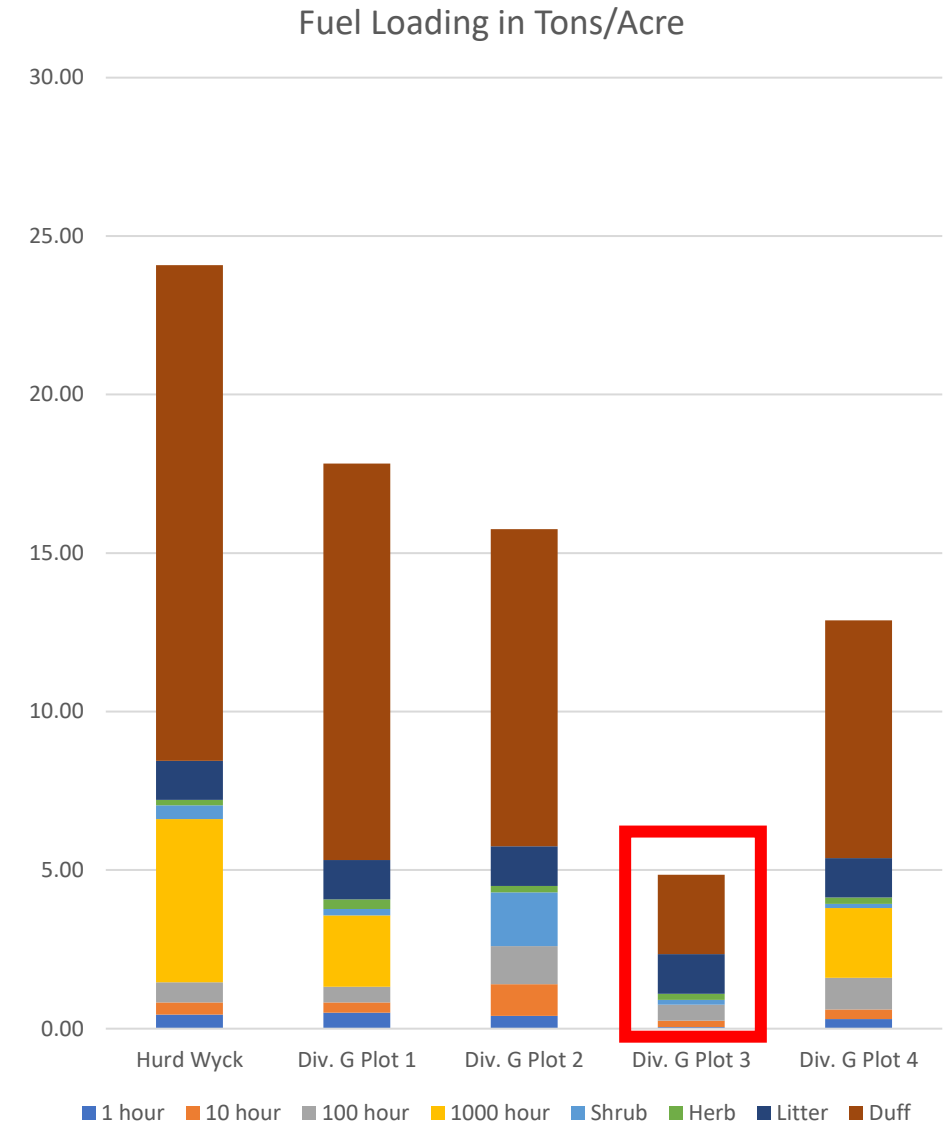
Div. G Plot 2



Fuel Loading in Tons/Acre



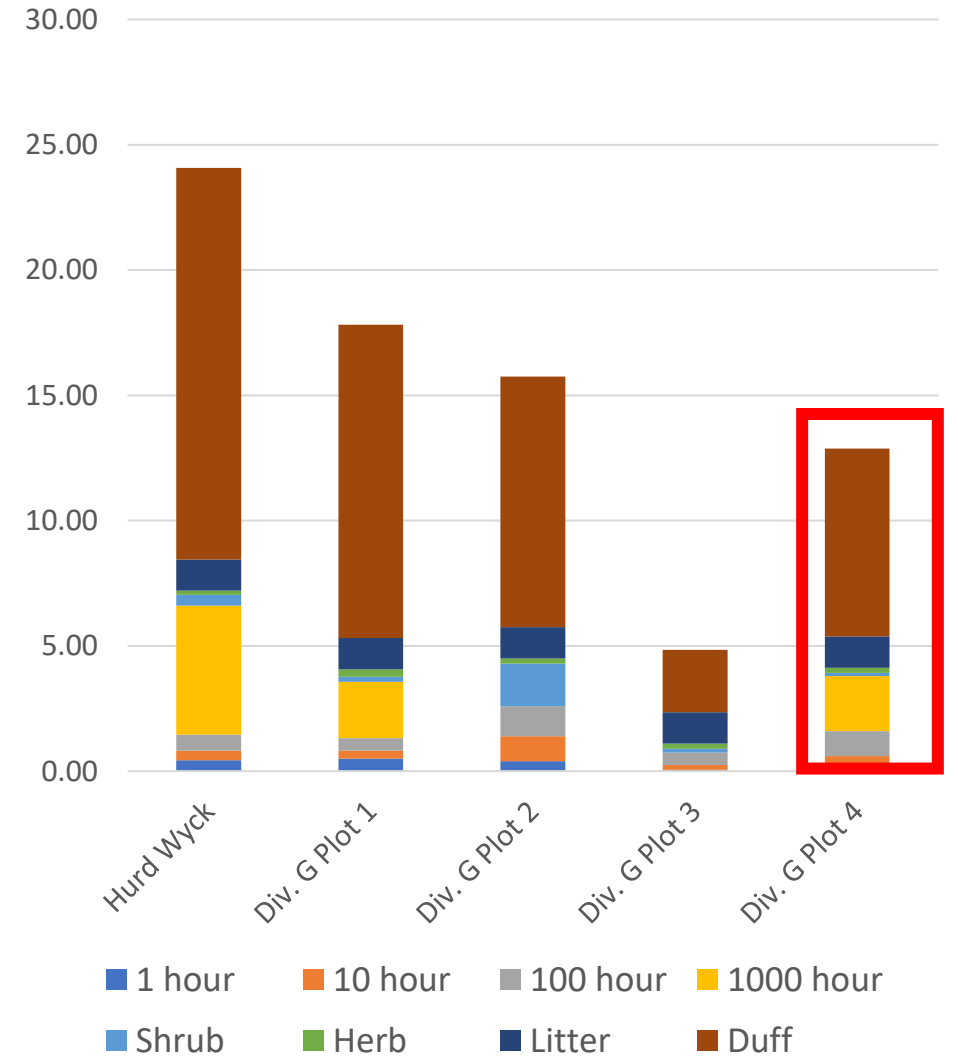
Div. G Plot 3



Div. G Plot 4



Fuel Loading in Tons/Acre



Low Shrub and Low Timber Litter

- Date: 08.25.2022
- Time: 1400
- Fuel Moisture@1000
 - 1 <6 to 7.5
 - 10 <6 to 13
 - 100 <6
- Weather – 4Bit RAWS
 - Temp: 82
 - RH: 28
 - Winds: 5 - WNW
 - FM: 5



Near Pole Creek

Moderate Shrub and Low Timber Litter

- Date: 08.25.2022
- Time: 1417
- Fuel Moisture @1000
 - 1 <6 to 7.5
 - 10 <6 to 13
 - 100 <6
- Weather – 4-Bit RAWS
 - Temp: 81
 - RH: 28
 - Winds: 1 - W
 - FM: 4



Near Pole Creek

Low Shrub and Moderate Timber Litter

- Date: 08.25.2022
- Time: 1800
- Fuel Moisture @1000
 - 1 <6 to 7.5
 - 10 <6 to 13
 - 100 <6
- Weather – 4 Bit RAWS
 - Temp: 84
 - RH: 25
 - Winds: 7 – WNW
 - FM: 4



Near Pole Creek

Moderate Timber Litter

- Date: 08.26.2022
- Time: 1300
- Fuel Moisture @1300
 - 1 = <6
 - 10 = 7 to 8
 - 100 = 9 to 10
 - 1000 = 8.5 to 17
- Weather 4 Bit RAWS
 - Temp: 81
 - RH: 21
 - Winds: 5 WNW
 - FM: 5



Near Squaw Creek

Moderate Shrub and Moderate Timber Litter

- Date: 08.26.2022
- Time: 1730
- Weather – 4-Bit RAWS
 - Temp: 84
 - RH: 18
 - Winds: 8 W
 - FM: 4



In Pole Creek - Steeper slopes, and directional channeling increased fire behavior and fuel consumption in the narrow valley

Fire Effects – Low Severity



Fire Effects –
Moderate
Severity



Fire Effects – Moderate Severity



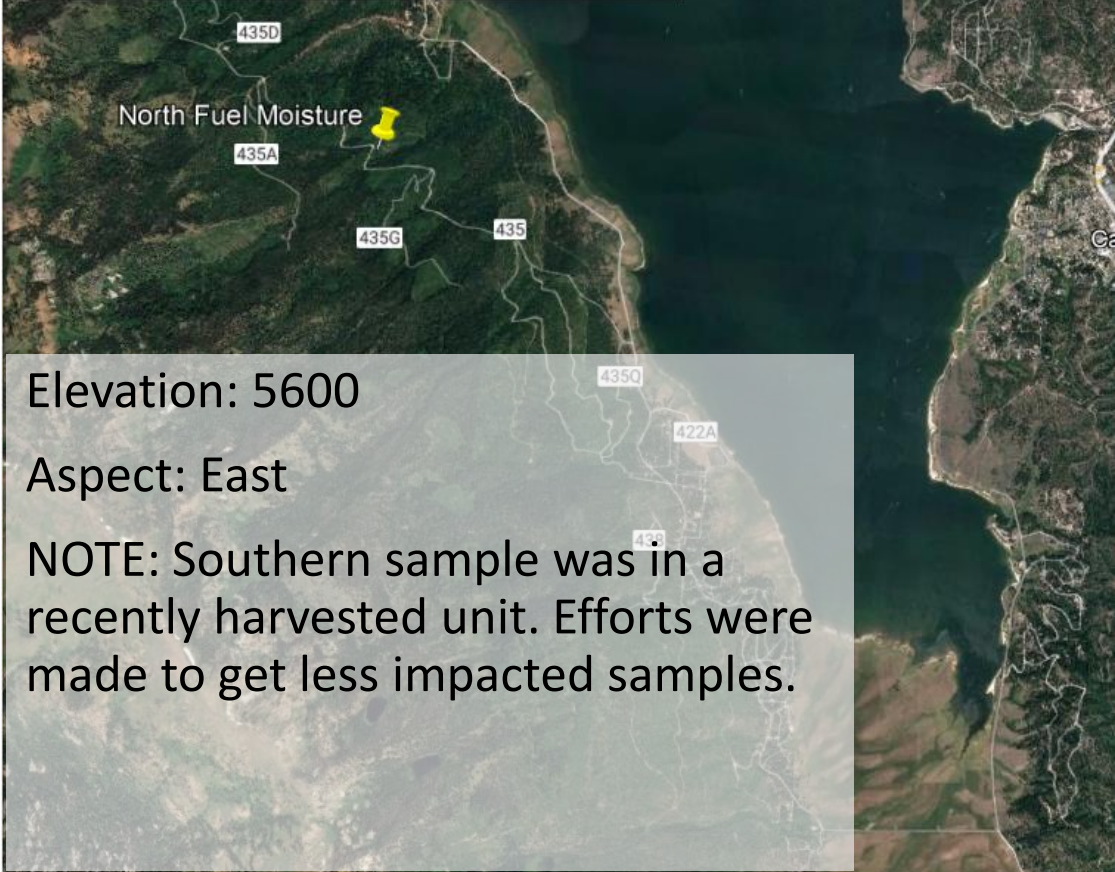
Near Wilson Peak

Fire Effects –
High Severity



Near Wilson Peak

Fuel Moisture Near Four Corners Fire



Elevation: 5600

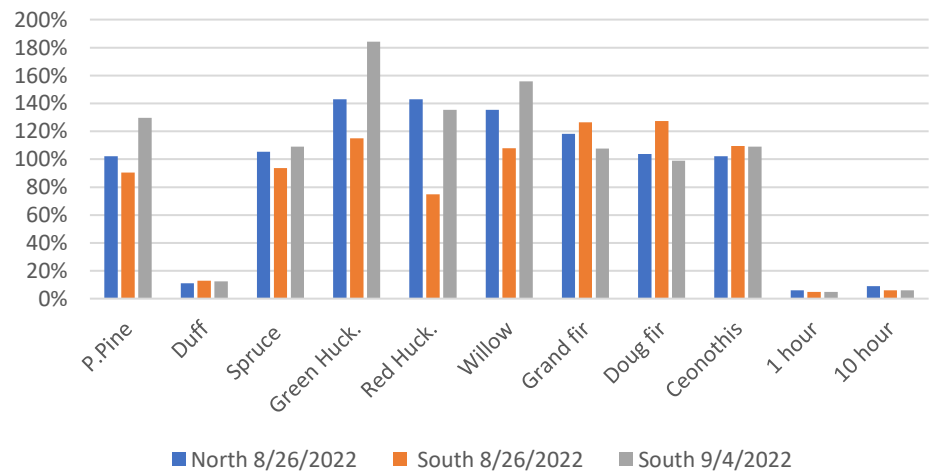
Aspect: East

NOTE: Southern sample was in a recently harvested unit. Efforts were made to get less impacted samples.



	North 8/26/2022	South 8/26/2022	South 9/4/2022
P.Pine	102%	91%	130%
Duff	11%	13%	13%
Spruce	105%	94%	109%
Green Huck.	143%	115%	184%
Red Huck.	143%	75%	135%
Willow	135%	108%	156%
Grand fir	118%	127%	108%
Doug fir	104%	127%	99%
Ceonothis	102%	110%	109%
1 hour	6%	5%	5%
10 hour	9%	6%	6%

Fuel Moistures Near the Four Mile Fire



Moderate Shrub, Moderate Timber Litter

- Date: 08.30.2022
- Time: 1330
- Fuel Moisture @1300
 - 1 = 7.5 to 9.5
 - 10 = 9 to 11
- Weather
 - Temp: 77
 - RH: 54
 - Winds: Calm up slope

Near French Creek



Fire Effects



Moderate Timber Litter

- Date: 09.01.2022
- Time: 1000
- Fuel Moisture
 - 1 – <6
 - 10 – <6
 - 100 – 10 to 11
- Weather
 - Temp: 71
 - RH: 46



Near French Creek

Low Shrub Low Litter

- Date: 09.01.2022
- Time: 1330
- Fuel Moisture
 - 1 – <6
 - 10 – <6
 - 100 – 10 to 11
- Weather
 - Temp: 80
 - RH: 20
 - Winds: 3



Near Willow Creek

Moderate Timber Litter and Moderate Shrub

- Date: 09.02.2022
- Time: 1700
- Fuel Moisture @ 1530
 - 1 - <6 to 10
 - 10 – 11 to 12
 - 100 – 9.5 to 12
- Weather @ 1700
 - Temp: 74
 - RH: 34



Near Willow Creek



Moderate Fire Effects – Waterline road



Low Fire Effects – Waterline Road
